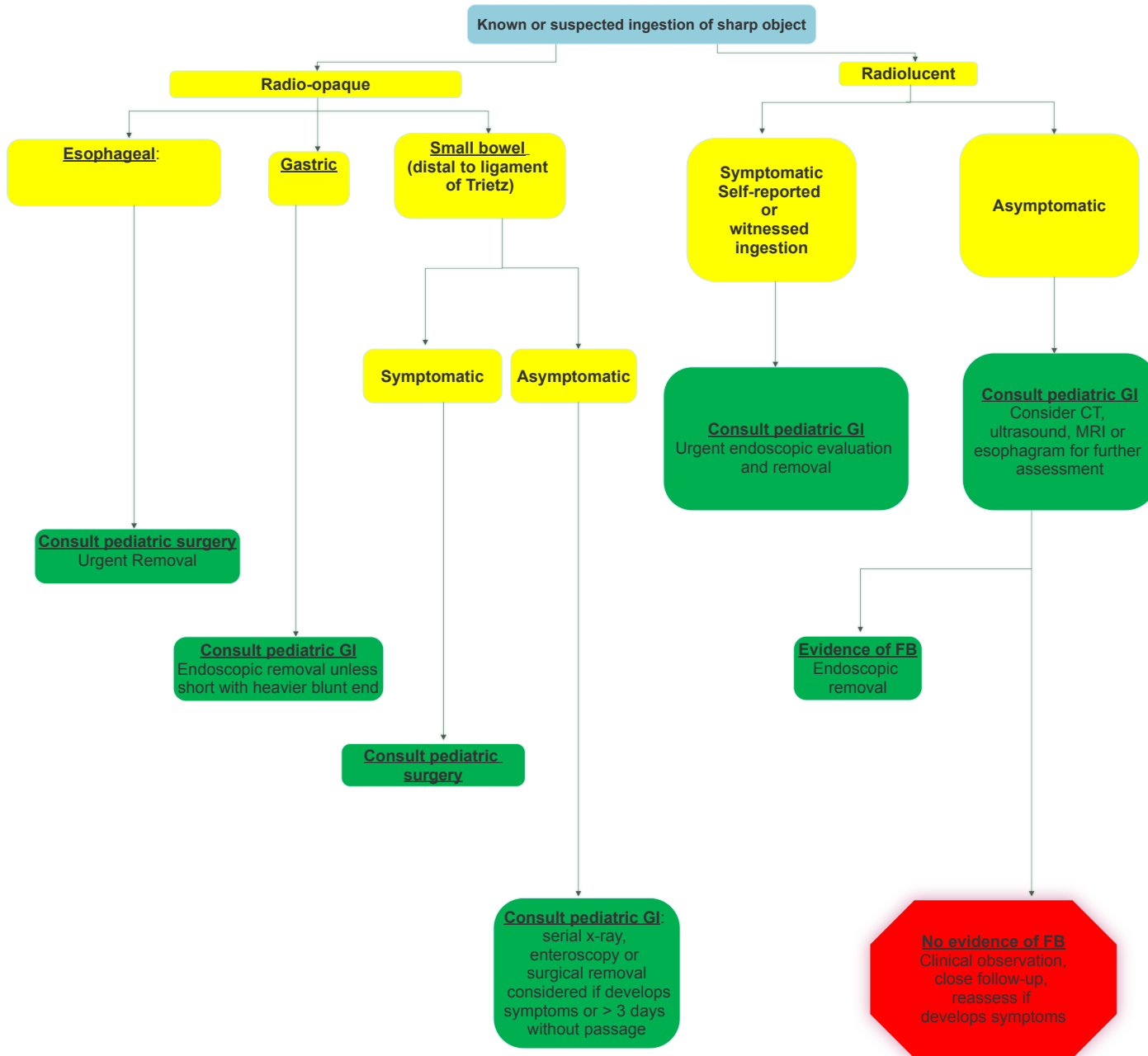


Management of Sharp or Pointed Objects in GI Tract**
 **If object at OR above clavicles consult ENT



SSMHealth Cardinal Glennon
 Access Center Transfer Line
888-229-2424

[1. SSMHealth Cardinal Glennon CPG Home](#)

2. References:
[Management of Ingested Foreign Bodies in Children: A Clinical Report of the NASPGHAN Endoscopy Committee.](#)

3. Key Notes:
 GI tract Foreign Body (FB) above clavicles: Consult Ear Nose and Throat (ENT) division
 GI tract FB below the clavicles:
 •Sharp FB in the esophagus: Consult Pediatric Surgery
 •Esophageal food impaction: Consult Pediatric GI
 •Esophageal button battery: Pediatric Surgery (Major Trauma activation)
 •Coins or non-sharp objects in the esophagus: Pediatric Surgery odd date days, Pediatric GI even date days.
 •FB located in stomach or distal including (magnet, sharp, battery): Consult Pediatric GI unless symptomatic, then consult Pediatric Surgery

4. Abbreviations:
 FB: Foreign Body
 ENT: Ear Nose and Throat
 GI: Gastrointestinal
 PEG: Polyethylene Glycol
 ED: Emergency Department
 EFI: Esophageal Food Impaction
 EoE: Eosinophilic Esophagitis
 BB: Button Battery
 NPO: Nil per oral
 IV: Intravenous
 Abx: Antibiotics
 CT: Computed Tomography
 MRI: Magnetic Resonance Imaging

5. Guideline Exclusion Criteria:
 This guideline is not intended for
 (a) Patients with multiple trauma.
 (b) Patients with established SLUCare/SSM Glennon providers (in such a situation - that provider should be notified in addition to following the guideline.
 (c) Foreign body in the airway or nasal passages.

6. Guideline Inclusion Criteria:
 This guideline is intended for the pediatric population seen at Cardinal Glennon, SLUCare, contacts from the Access Center or other routes.

7. Background information for Guideline:
 JPGN. 2015;60: 562

Owner - CGCH GI
Author: Dr. Jeff Teckman
Approved August 2020

[Disclaimer](#)
[Terms of Use](#)