

Divisions of Pediatric Cardiology and Cardiothoracic Surgery

Saint Louis University School of Medicine
at SSM Health Cardinal Glennon
Children's Hospital, St. Louis, MO

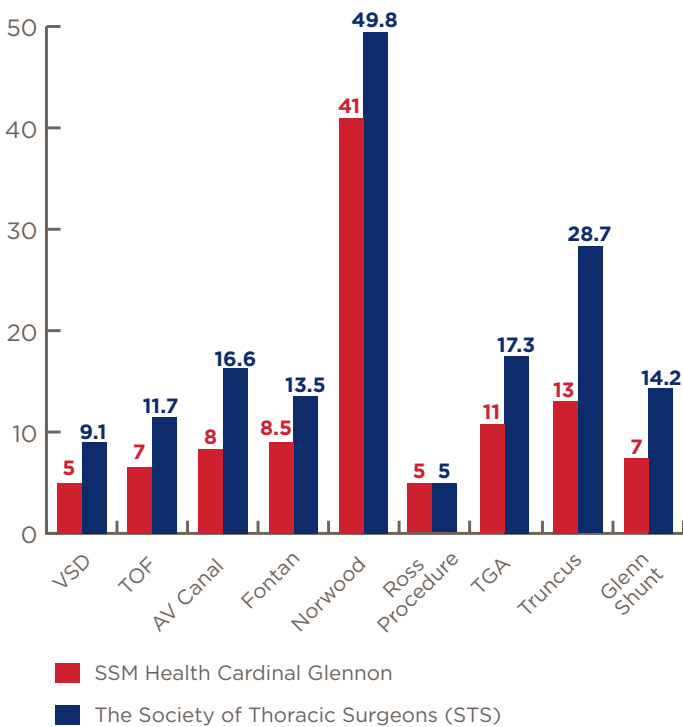


For the 8th consecutive year, the cardiology and cardiothoracic surgery programs at SSM Health Cardinal Glennon Children's Hospital are ranked among the best in the nation by U.S. News & World Report.

National recognition is for excellent patient outcomes and the expertise of surgeons and cardiologists in treating congenital and acquired heart disorders. Pediatric surgical outcomes are the best in the state of Missouri and survival rates at discharge for a wide variety of cardiac procedures meet or exceed national benchmarks. With demonstrated expertise, the faculty in both divisions oversee more than 5,000 outpatient clinic visits annually and perform more than 22,000 cardiovascular tests each year. The team also has a highly active cardiac telemedicine program and provides specialty outreach clinic services in Missouri and Illinois.

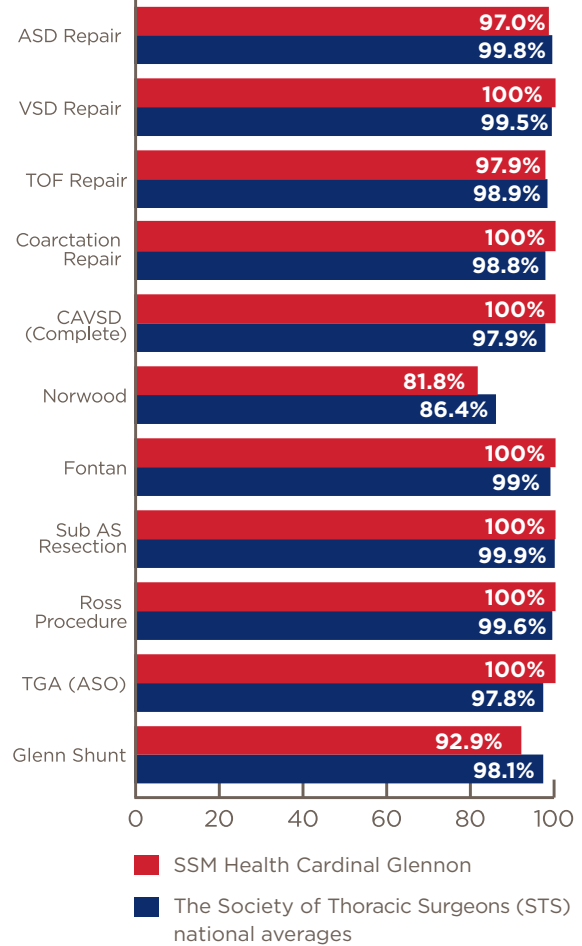
Length of Stay (Days)

July 2015 - June 2019



Survival Rates at Discharge

July 2015 - June 2019



ONLY Program in Region Offering Routine Fluorless Catheter Ablation Procedures

For the treatment of pediatric cardiac arrhythmias, electrophysiologist at SSM Health Cardinal Glennon are the only ones in the region routinely offering fluorless catheter ablation. The use of computerized mapping technology enables the team to perform more than 65% of all cardiac ablation procedures without fluoroscopy exposure, thereby minimizing long-term, cumulative effects of radiation exposure. In addition, the team excels at the implantation of cardiac defibrillators (ICDs) and pacemakers as well as loop recorder implants (ILR).

Pediatric Transcatheter Valve Replacement and Surgical Valve Repair

Interventional cardiologists implant a variety of proven transcatheter pulmonary valves, including the Melody™ and Sapien valves, for the replacement of damaged valves. The team also offers surgical aortic valve repair using a geometric annuloplasty ring. Data from the National Cardiovascular Data Registry (NCDR) IMPACT Registry™ of the American College of Cardiology Foundation showcase excellent outcomes for interventional and therapeutic procedures such as balloon angioplasty, valvuloplasty, device closure of anatomic defects, and intravascular stent placement. Procedures are performed in the hybrid catheterization suite, which is equipped for both interventional catheterization and surgical procedures.

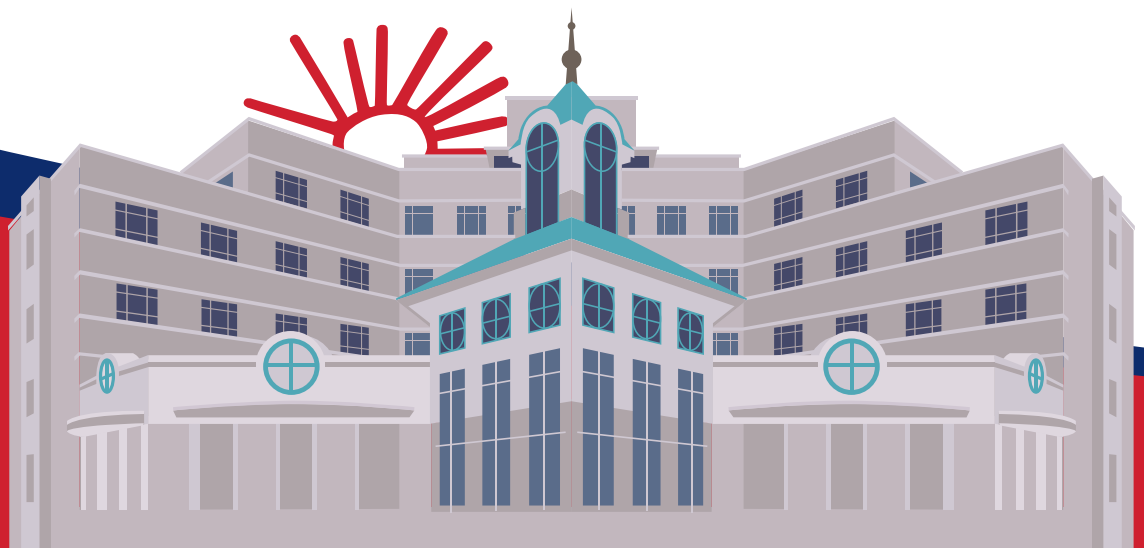
3D Cardiac Modeling and Valve Research

To optimize outcomes in complex cardiac cases, pediatric cardiologists and cardiothoracic surgeons are creating customized 3D heart and vascular models in the hospital's dedicated 3D Printing Center of Excellence. Co-founded and co-directed by SLUCare cardiologist Wilson King, MD, the center has two dedicated engineers and has created more than 500 models to help plan complex operative repairs for conditions such as unbalanced atrioventricular canal defect and double outlet right ventricle defects in addition to transcatheter device placement and electrophysiology procedures. Research is now under way examining the feasibility of creating 3D-printed artificial valves for customized valve replacement with improved durability and hemocompatibility in conjunction with the SLU School of Engineering and the Department of Physics.

Cardiac Transplantation and Heart Assist Devices

The cardiac transplant program at SSM Health Cardinal Glennon has excellent patient and graft survival rates with 100% one-year and three-year survival rates for pediatric transplant patients as reported in the Scientific Registry of Transplant Recipients (SRTR). When necessary as a bridge to transplant, the team offers three advanced cardiac assist devices, including CentriMag™ HeartWare™ and the Berlin EXCOR™ in addition to ECMO.

For physician consultations, contact the SSM Health Cardinal Glennon Access Center at **1-888-229-2424**.



St. Louis Fetal Care Institute - Fetal Heart Care Program

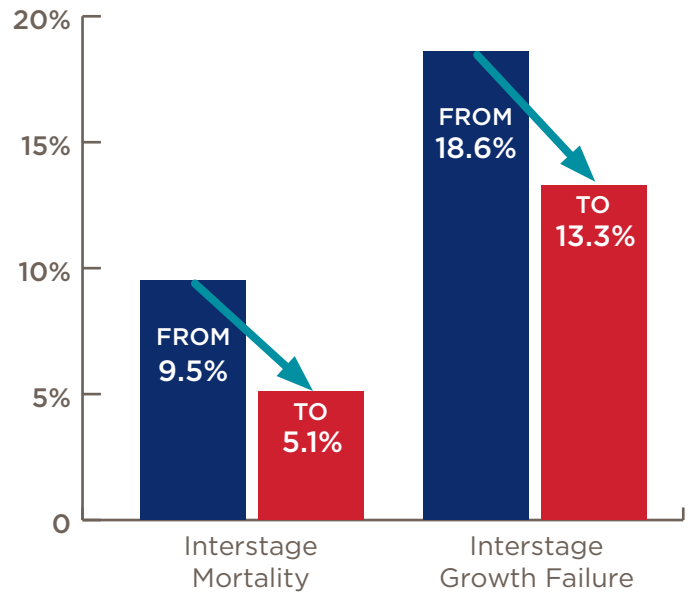
In a collaborative partnership between SSM Health Cardinal Glennon Children's Hospital, SSM Health St. Mary's Hospital and Saint Louis University School of Medicine, cardiologists with the St. Louis Fetal Care Institute offer multidisciplinary care and counseling for families whose children are diagnosed with cardiac problems prior to birth. The institute includes pediatric and fetal surgeons as well as maternal-fetal specialists. More than 500 fetal echocardiograms are performed annually. The cardiac team provides diagnosis and counseling as early as 18 weeks of gestation and has a unique collaboration with maternal-fetal medicine to offer EXIT (ex utero intrapartum treatment) procedures for select high-risk babies. SSM Health Cardinal Glennon's echo lab is accredited by the Intersocietal Accreditation Commission (IAC) for pediatric transthoracic echo, pediatric transesophageal echo, and fetal echo.

Long-Term Follow-Up Care

SSM Health Cardinal Glennon is one of 68+ centers in the country participating in the National Pediatric Cardiology Quality Improvement Collaborative (NPC-QIC) to improve outcomes of children with complex congenital heart disease. Initial quality and patient care improvement efforts of the collaborative include the implementation of an Interstage Monitoring Program, which has resulted in a significant reduction in the mortality of children diagnosed with single ventricle defects as well as a reduction in those experiencing Interstage growth failure. Phase II of the NPC-QIC collaborative is focused on the improvement of developmental outcomes in children with single ventricle defects. Other clinical research efforts focus on children diagnosed specifically with hypoplastic left heart syndrome (HLHS). The program at SSM Health Cardinal Glennon coordinates long-term neuro-developmental follow-up care.

For our older patients, a transition to our Adult Congenital Heart Disease Clinic is provided to optimize the management of pediatric cardiac patients as they age through adolescence and enter adulthood.

NPC-QIC Interstage Monitoring Program



Source: NPC-QIC

Marfan Syndrome

To care for children diagnosed with Marfan Syndrome and other related disorders, SSM Health Cardinal Glennon has a specialized clinic overseen by pediatric cardiologists. In collaboration with the Division of Genetics, the clinic also offers genetic counseling and screenings for young patients and family members.

Pediatric Cardiology Fellowship

Saint Louis University School of Medicine offers an accredited three-year fellowship in pediatric cardiology at SSM Health Cardinal Glennon Children's Hospital.

SLUCare Division of **Pediatric Cardiology**

Kenneth Schowengerdt, MD, FAAP, FACC

Director, Division of Pediatric Cardiology
Wieck-Sullivan Professor of Pediatrics
Saint Louis University School of Medicine

Jason Garnreiter, MD

Wilson King, MD

Gloria Lehmann, MD

Ugonna Nwankwo, MD

**Joining faculty as of February 2021*

Robert Petersen, MD

Renuka Peterson, MD

Chetana Reddy, MD

Jamie Sutherell, MD

SLUCare Division of **Cardiothoracic Surgery**

Andrew Fiore, MD

Charles Huddleston, MD

Corinne Tan, MD

The SSM Health Cardinal Glennon Access Center provides rapid consultations with attending cardiology specialists. For physician consultations or referrals, call the SSM Health Cardinal Glennon Access Center at **1-888-229-2424**.

Pediatric cardiologists and cardiothoracic surgeons at SSM Health Cardinal Glennon Children's Hospital are faculty of Saint Louis University School of Medicine and members of its SLUCare Physician Group. The hospital is the only free-standing, not-for-profit Catholic pediatric hospital in the United States and is a member of SSM Health, one of the largest Catholic health care systems in the country. For more information about the hospital, visit cardinalglennon.com.



1465 S. Grand Boulevard | St. Louis, MO 63104