

Division of Pediatric Hematology and Oncology

SSM Health Cardinal Glennon Children's Hospital and Saint Louis University School of Medicine, St. Louis, MO



Pediatric oncologists and hematologists at SSM Health Cardinal Glennon Children's Hospital belong to the faculty of Saint Louis University School of Medicine and are members of its SLUCare physician group. They oversee a widely respected pediatric oncology program that specializes in all types of childhood cancers as well as blood disorders such as sickle cell anemia, hemophilia and clotting disorders. The multidisciplinary program includes specialists in pediatric surgery, neurosurgery, orthopedic surgery, radiology, radiation oncology and clinical pathology.

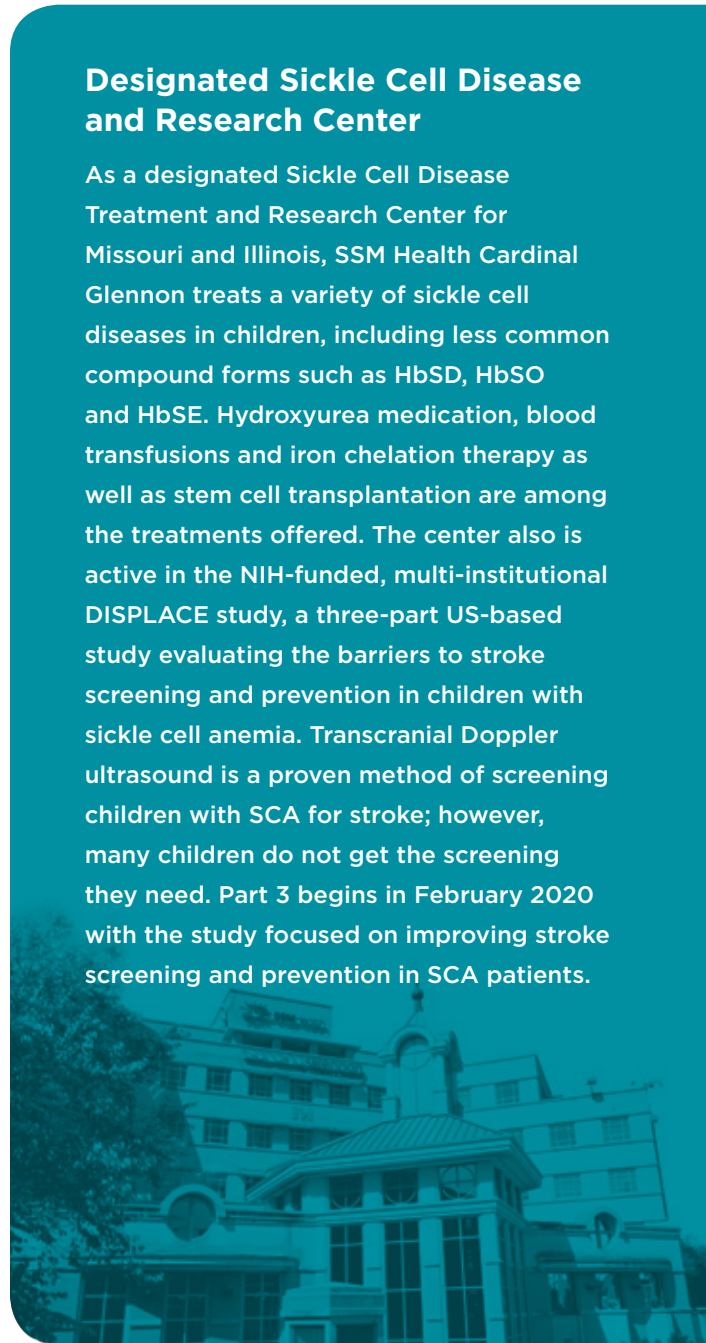
The Division has a wide range of clinical and translational research under way, including more than 60 active clinical trials. The hospital also is a founding member of the Beat Childhood Cancer Consortium and actively participates in research collaborations as part of its affiliations with the Children's Oncology Group, the Pediatric Blood and Marrow Transplant Consortium, and the Primary Immunodeficiency Treatment Consortium.

Personalized Medicine

SSM Health Cardinal Glennon is at the forefront of using advanced genomic profiling to provide individualized cancer treatment options and improve survival outcomes for young patients with relapse, refractory or high-risk cancers. In addition to the National Cancer Institute's MATCH trial, which looks for gene mutation that can be targeted by specific drugs, the Division has participated in a series of Beat Childhood Cancer trials that use advanced DNA and RNA profiling to identify drug combinations for children with advanced cancers.

Designated Sickle Cell Disease and Research Center

As a designated Sickle Cell Disease Treatment and Research Center for Missouri and Illinois, SSM Health Cardinal Glennon treats a variety of sickle cell diseases in children, including less common compound forms such as HbSD, HbSO and HbSE. Hydroxyurea medication, blood transfusions and iron chelation therapy as well as stem cell transplantation are among the treatments offered. The center also is active in the NIH-funded, multi-institutional DISPLACE study, a three-part US-based study evaluating the barriers to stroke screening and prevention in children with sickle cell anemia. Transcranial Doppler ultrasound is a proven method of screening children with SCA for stroke; however, many children do not get the screening they need. Part 3 begins in February 2020 with the study focused on improving stroke screening and prevention in SCA patients.



**MAGNET
RECOGNIZED**



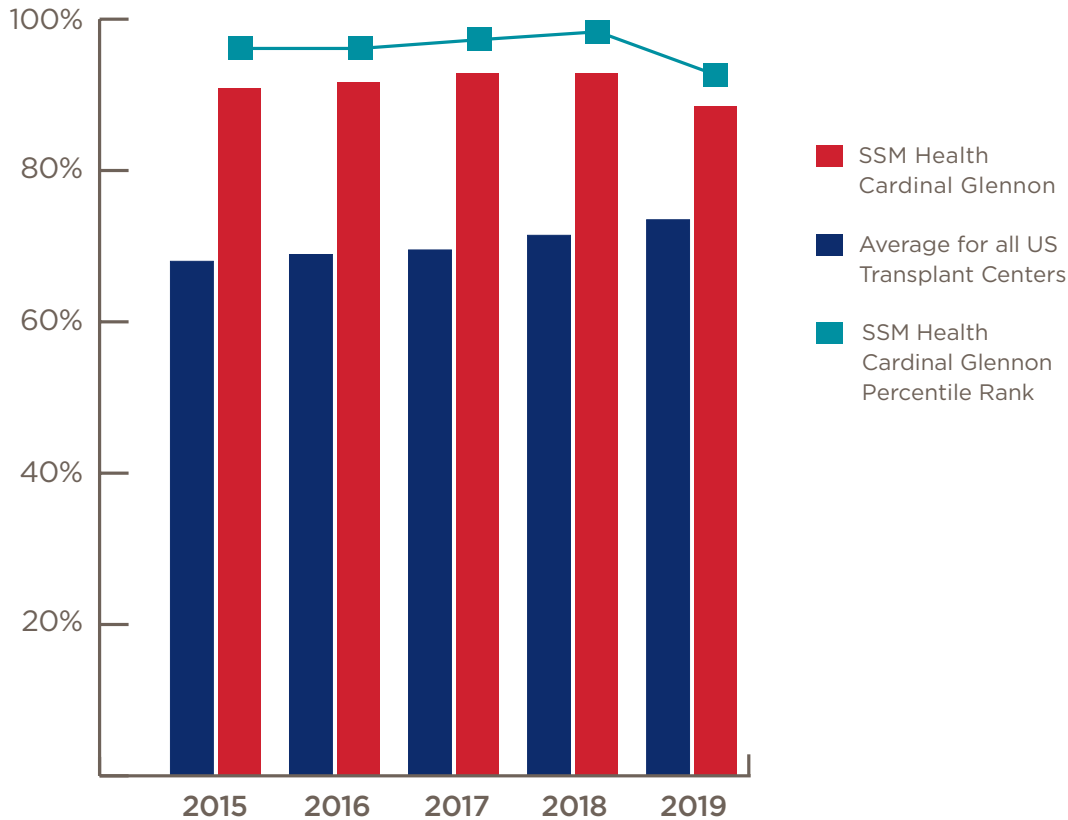
**AMERICAN NURSES
CREDENTIALING CENTER**

Blood and Bone Marrow Transplant Program

Survival outcomes for patients with allogeneic transplants in our Blood and Bone Marrow Transplant Program consistently exceed national averages, with one-year survival rates in the 90th+ percentile of all US transplant

centers for more than ten years. The program is accredited by the Foundation for Accreditation of Cellular Therapy (FACT) and is a leader in the use of umbilical cord blood stem cell transplants for cancer as well as blood and immune disorders.

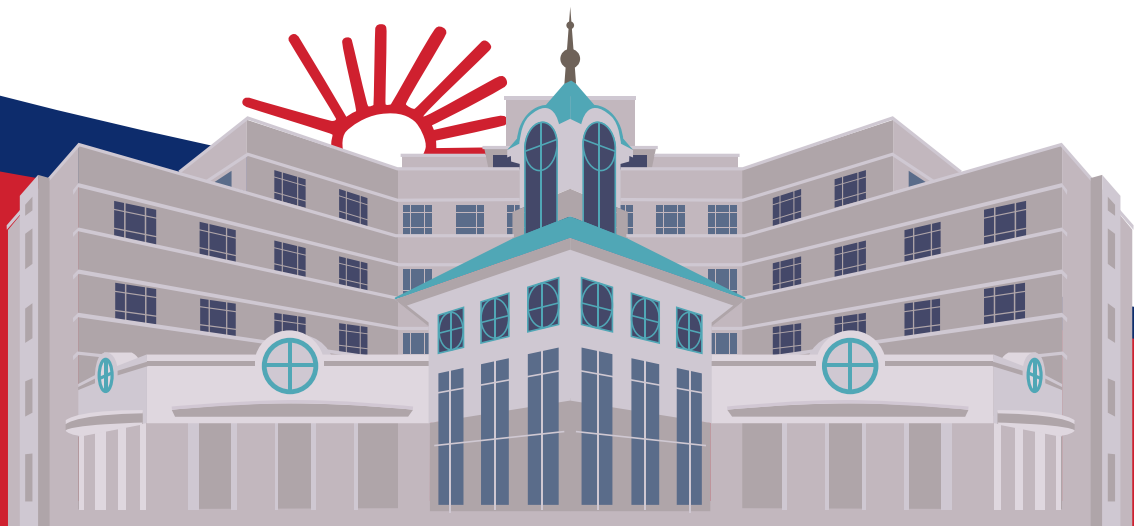
One-Year Overall Survival by Year



Neuro-Oncology

The Pediatric Brain Tumor Program provides multidisciplinary services for newly diagnosed patients and those with recurrent brain tumors. The comprehensive program brings several advanced subspecialists under one umbrella, including pediatric neurosurgeons, neuro-oncologists, neuro-radiologists, neuro-pathologists and radiation oncologists as well as ancillary specialists in endocrinology, psychology,

physical and occupational therapy, social work, and palliative care. The program offers several clinical trials for novel treatments available through the Children's Oncology Group and Beat Childhood Cancer consortium. Collaborating with the Neurofibromatosis and Tuberous Sclerosis Complex clinics, the team also has conducted clinical trials and offers Selumetinib (MEK inhibitor) for the treatment of inoperable plexiform tumors in some neurofibromatosis type I patients.

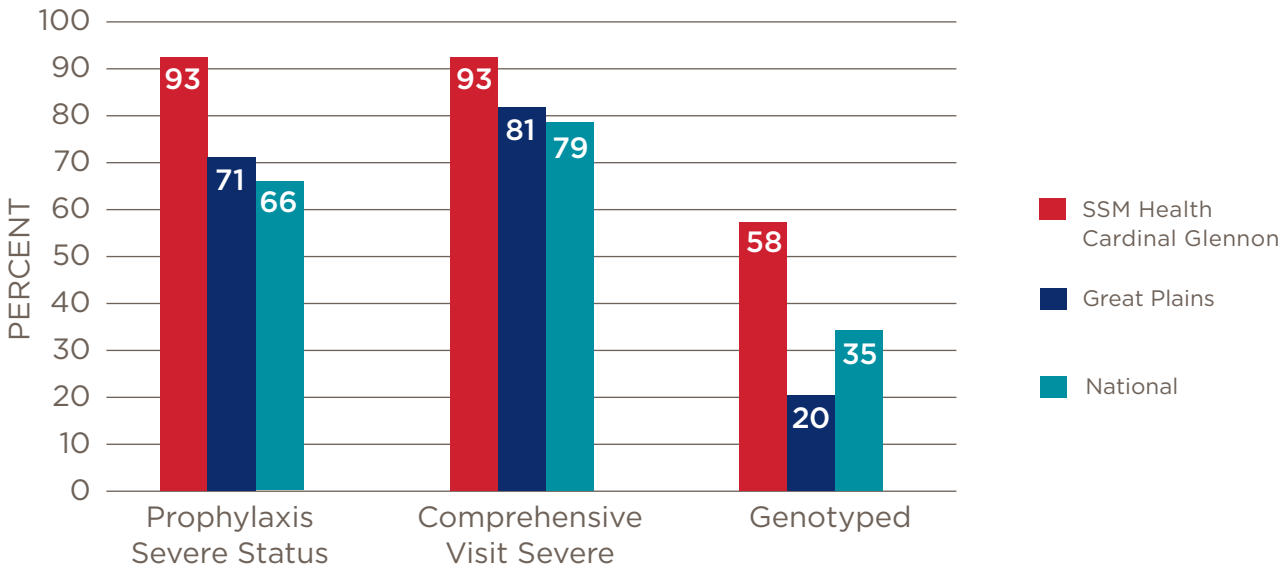


Hemophilia/Clotting Disorders

SSM Health Cardinal Glennon operates the oldest federally funded pediatric hemophilia treatment center in the region. It is recognized for its long-standing expertise in the treatment of hemophilia and other bleeding or clotting disorders, such as von Willebrand disease.

Hematologists offer the latest treatment options, including emicizumab (Hemlibra), which was recently approved by the FDA. They also oversee more than a dozen clinical trials, half of which involve new medications.

Hemophilia Treatment Center Quality Metrics



Bone and Soft Tissue Sarcomas

SLUCare’s experienced multidisciplinary sarcoma team is nationally recognized for the care of patients diagnosed with bone and soft tissue tumors, including the most common musculoskeletal cancers of childhood — osteosarcoma, Ewing sarcoma, rhabdomyosarcoma — as well as less common soft tissue sarcomas. The team offers new technologies to enhance the functional outcomes for children with cancer who undergo limb preservation procedures.

Adolescent and Young Adult (AYA) Program

SSM Health Cardinal Glennon has established a robust adolescent and young adult (AYA) program within the Division of Pediatric Hematology and Oncology. The multidisciplinary team includes oncologists and other physicians as well as nurses, a social worker and psychologists who offer a wide range of medical and psychosocial services in addition to actively identifying appropriate clinical trials focusing on both enhancing long-term survival and quality of life. Additional

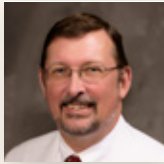
resources of special interest to this population include fertility preservation consultations, teen camps, support groups and early introduction of palliative care services to help optimize symptom management. An onsite educator is available to coordinate with school programs to help patients remain current on coursework during lengthy treatment stays.

Late Effects Program

As more and more children and adolescents become cancer survivors, it has become increasingly important to focus on their long-term health. While current cancer treatments are increasingly effective, they also carry many short- and long-term effects that can affect future health and quality of life. SSM Health Cardinal Glennon has a well-established Late Effects Program to help these individuals transition to being well informed and empowered regarding their future health management. For certain populations—such as those treated for brain tumors or who received stem cell transplants—there are specific late effects clinics that incorporate additional specialists to address their specific long-term needs.

For physician consultations, contact the SSM Health Cardinal Glennon Access Center at **1-888-229-2424**.

SLUCare Division of **Pediatric Hematology** and **Oncology Faculty**



William Ferguson, MD

Director, Division of Pediatric Hematology and Oncology

Professor of Pediatrics

Saint Louis University School of Medicine

Aleksandar Babic, MD, PhD

Deepika Bhatia, MD

Leili Dolatshani, MD

John Dombrowski, MD

Lauren Draper, MD

David Greenberg, MD

Christopher Hugge, MD

Pournima Navalkele, MD

John Puetz, MD

Shermini Saini, MD

Anne Bisch, RN, MSN, CPNP-AC

Director of Nursing – Hematology, Oncology and Bone Marrow
Transplant Units

Lauren Delashmit, RN, MSN, CPNP

Robert Parker, RN, MSN, CPNP

Abigail Sharamitaro, RN, MSN, CPNP, CPON

Pediatricians at SSM Health Cardinal Glennon Children's Hospital are faculty of Saint Louis University School of Medicine and members of SLUCare Physician Group, the clinical arm of the School of Medicine. The hospital is the only free-standing, not-for-profit Catholic pediatric hospital in the United States and is a member of SSM Health, one of the largest Catholic health care systems in the country. For more information about the hospital, visit cardinalglennon.com.



1465 S. Grand Boulevard | St. Louis, MO 63104